

SIX PONDS

PLYMOUTH, MASS

www.sixponds.org



www.wildlandstrust.org



Little Long Pond

Gallows Pond

Long Pond

Round Pond

Halfway Pond



SIX PONDS

PLYMOUTH, MASS



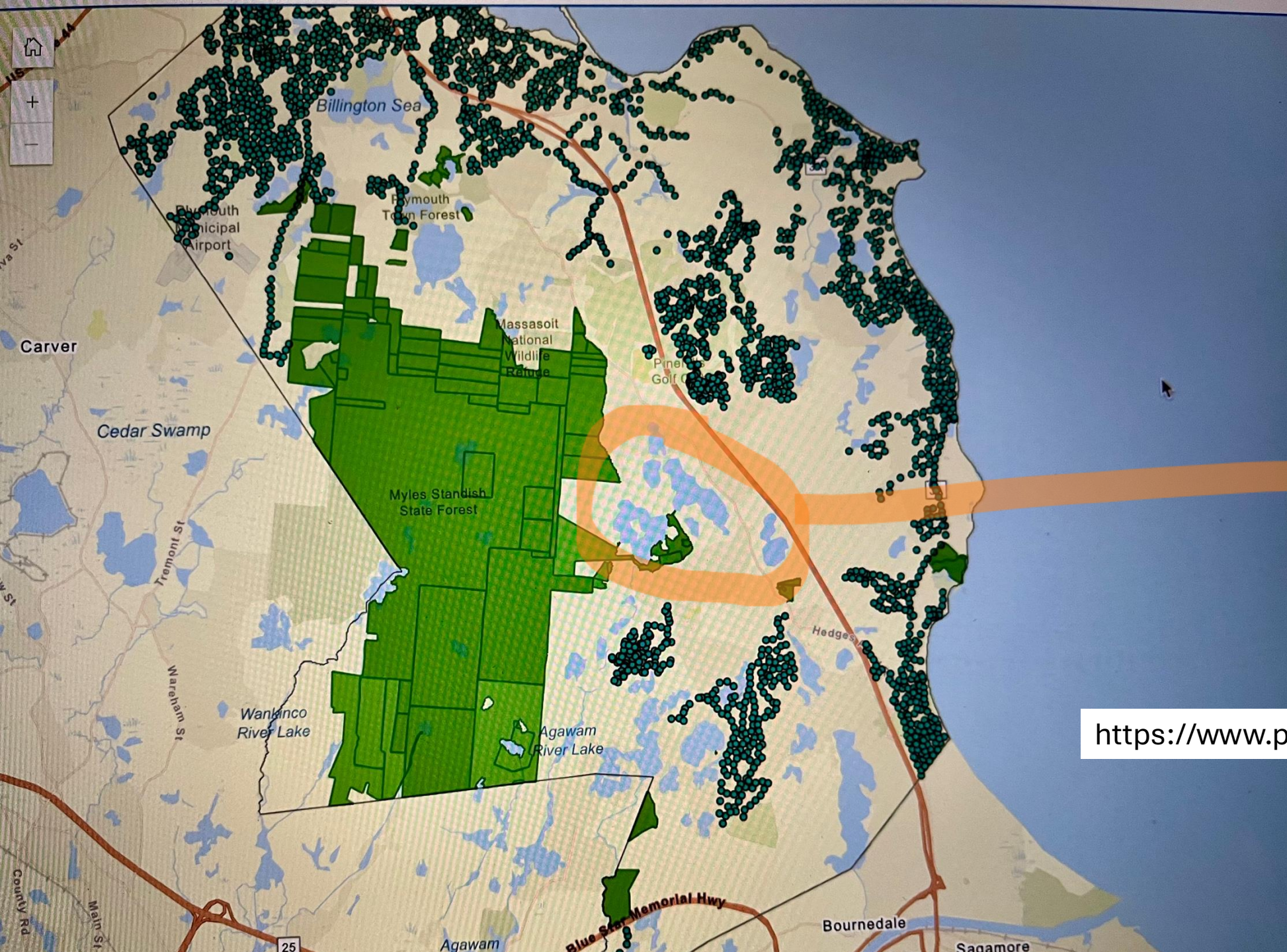
Bloody Pond

An aerial photograph of a large pond, Halfway Pond, surrounded by a dense forest. The trees are in various stages of autumn, with colors ranging from bright green to deep brown. The pond's surface is dark blue and reflects the sky. A white text box in the upper left corner contains the text "Halfway Pond".

Halfway Pond

Bloody Pond





Six Ponds area

<https://www.plymouth-ma.gov/340/GIS>



Massasoit National Wildlife Refuge

PINEHILLS

The Pinehills

SIX PONDS

REDBROOK

Standish State Forest

Ellisville Harbor State Park



Photo credit North and South Rivers Watershed Association



**Every year, devastating wildfires burn across the U.S.
Over 4,500 acres burned in MA last year.**

Our reality:

A growing number of people are living where wildfires are a real risk – and recent development in Plymouth has increased in these areas.

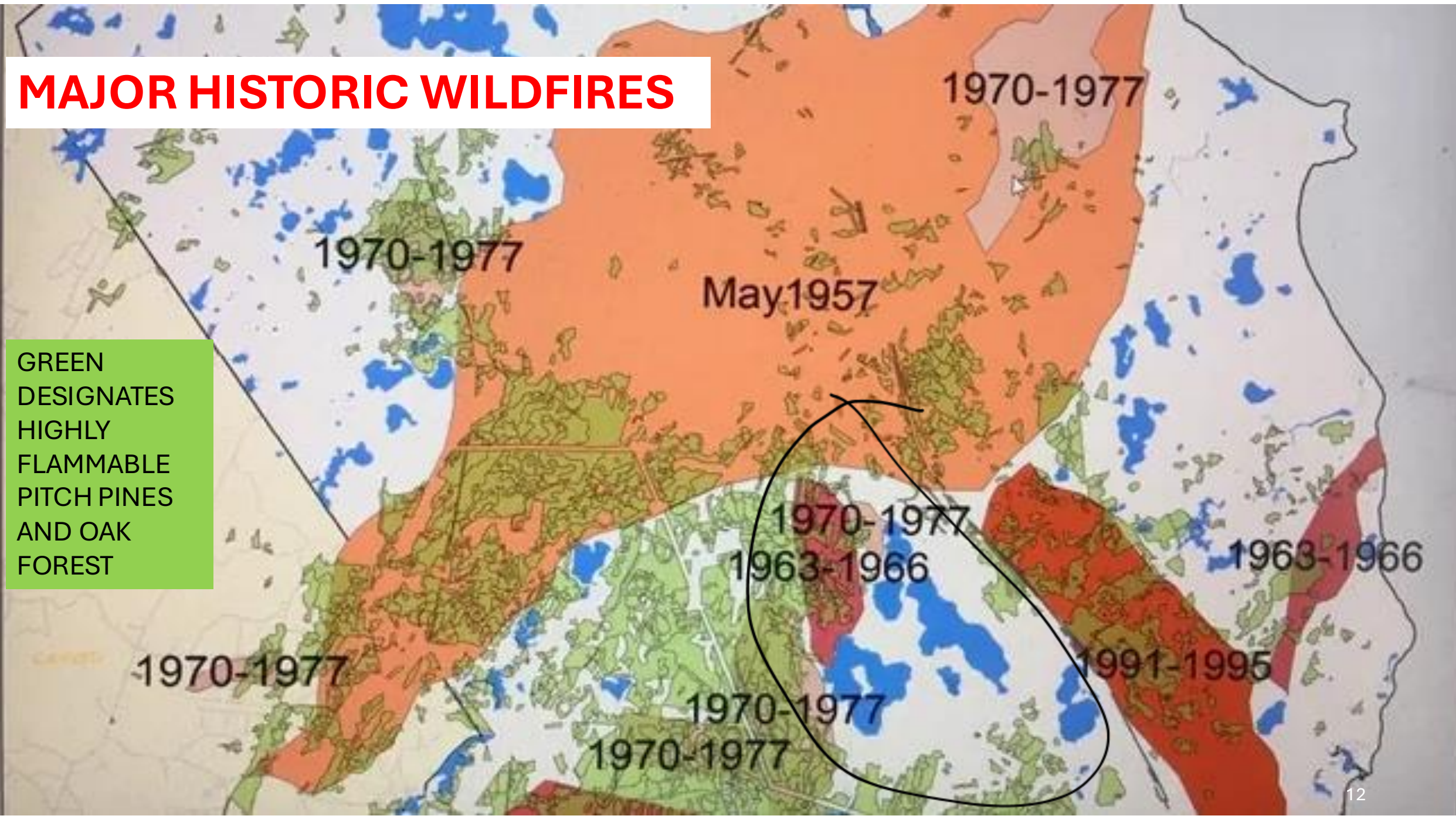
**We are living within the Atlantic Coastal Pine Barrens,
an ecosystem that is “fire prone” .**

These fires will continue to happen.





MAJOR HISTORIC WILDFIRES



GREEN
DESIGNATES
HIGHLY
FLAMMABLE
PITCH PINES
AND OAK
FOREST

The Six Ponds Association's neighborhood is a certified Firewise Neighborhood



The Firewise USA® program provides simple, effective steps to help communities reduce the risk of destruction from wildfire.

ABOUT FIREWISE®

The national Firewise USA® recognition program provides a collaborative framework to help neighbors in a geographic area to get organized, find direction, and take action to increase the ignition resistance of their homes and community and to reduce wildfire risks at the local level.

Alex Belote

Alex.belote@mass.gov





Six Ponders helping a neighbor clean up and remove “fuel”

THREE BIGGEST WILDFIRE BEHAVIOR FACTORS:

1. Topography (lay of the land)

2. Weather (wind speed, relative humidity, and ambient temperature)

3. Fuel (vegetation and man-made structures)

**EXTREME WILDFIRE BEHAVIOR,
FUEL QUANTITY, AND
WEATHER CONDITIONS
OFTEN COINCIDE**

- Extended drought
- High winds
- Low humidity
- High temperatures
- Excessive fuel buildup (live and dead vegetation material)

FUEL

**is the only factor
within our ability
to control!**

CHECKLIST / THINGS YOU CAN DO

- **Clear** — ignitable material such as needles and leaves from roof, gutters, eaves, porches and decks.
- **Repair** — any loose or missing roof shingles/tiles and caulk any gaps or openings on roof edges.
- **Cover** — exterior attic vents and install metal wire mesh (1/8 inch or smaller) to under-eave and soffit vents.
- **Relocate** — items kept under decks or porches; swap out vegetation in these areas for rock or gravel.

CHECKLIST / THINGS YOU CAN DO - continued....

- **Replace — mulch with hardscaping, including rock, gravel or stone.**
- **Remove — ignitable features within 30 feet of all structures including firewood piles, portable propane tanks and dry and dead vegetation.**
- **Protect — water dry grass and shrubs, trim brown vegetation and dispose of yard waste.**
- **Prune — low hanging branches (6-10 feet for taller trees, 1/3 of tree height for smaller trees); remove any tall grasses, vines and shrubs from under trees.**
- **Contact — neighbors and create a plan to address shared wildfire safety concerns together.**

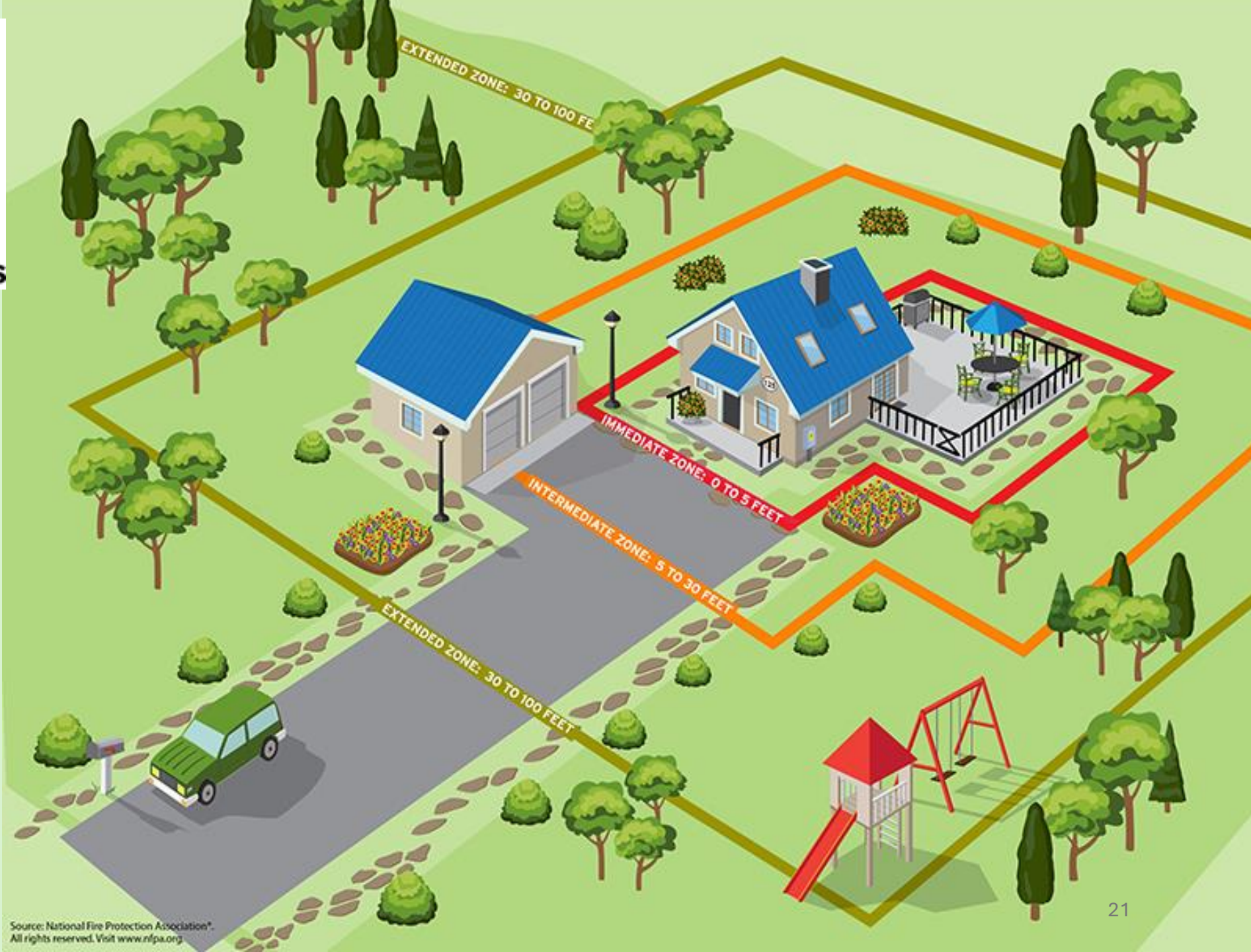


The PRIMARY threat to your home are flying EMBERS



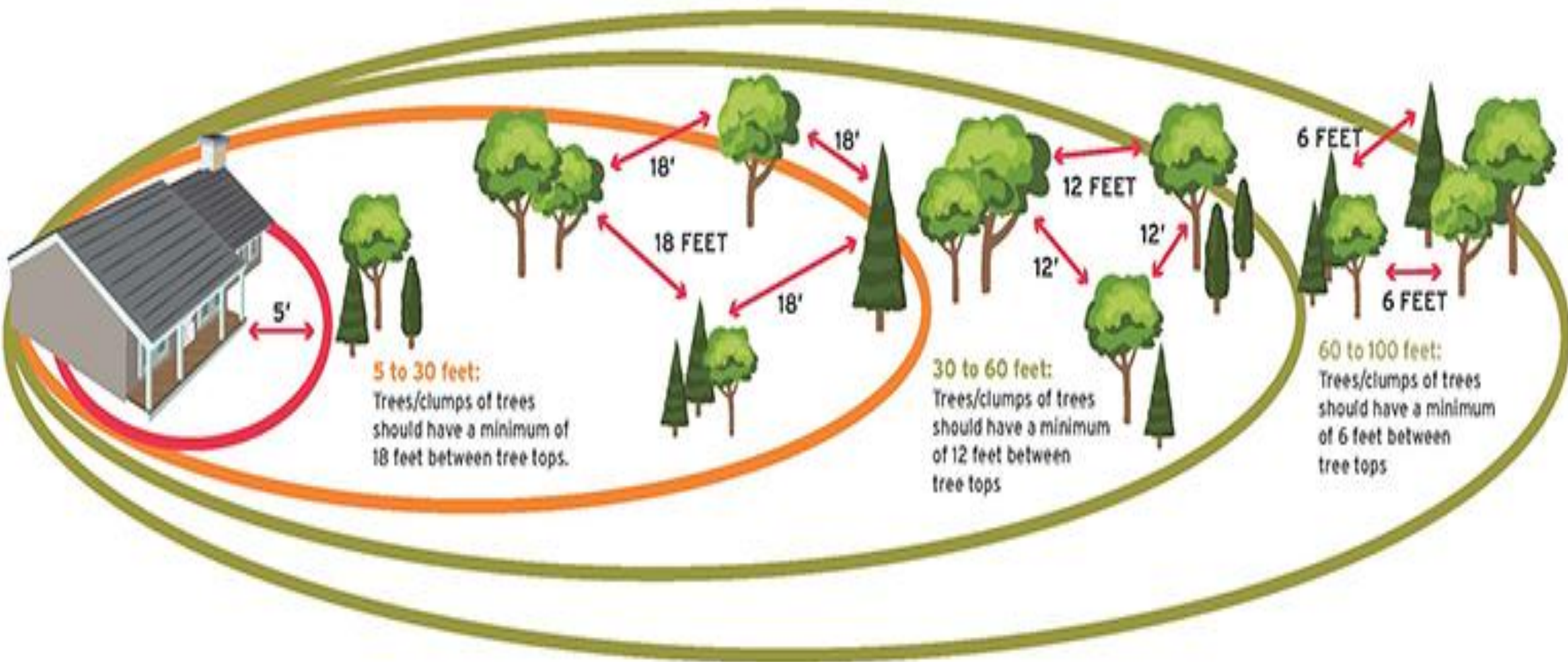
FIREWISE USA®

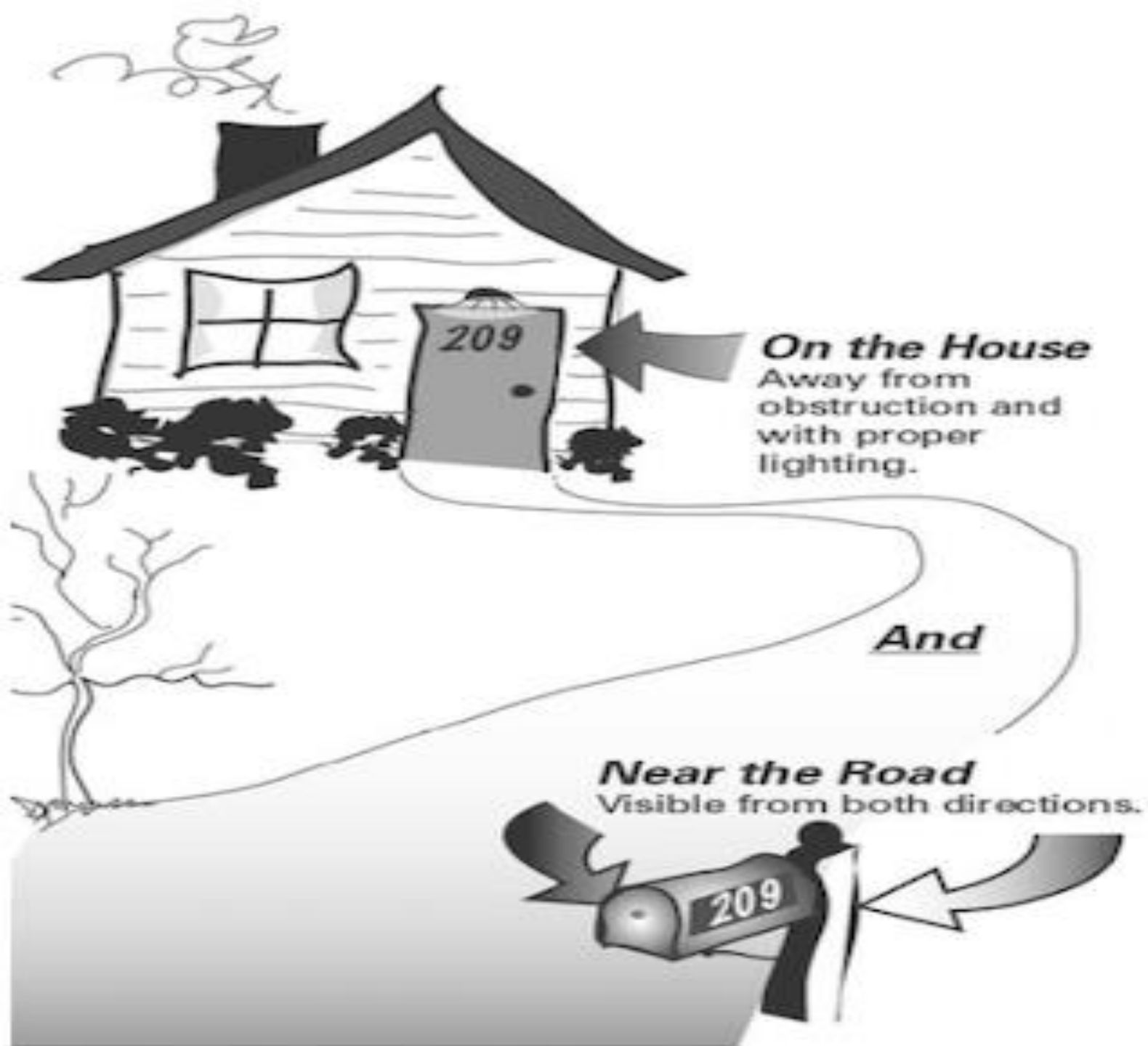
Residents reducing wildfire risks



Source: National Fire Protection Association®. All rights reserved. Visit www.nfpa.org

TREE SPACING





House Numbers –

**Is yours visible
from the street?**

**Can the Fire Dept
find your
house?**

**Can they make
it down
your driveway?**



Plymouth Fire Department, Town of Plymouth, DCR to Host Wildfire Discussion

WHEN:

Wednesday, March 12, from 6:30-8:30 p.m.

WHERE:

**Plymouth Community Intermediate School,
117 Long Pond Road, Plymouth**

The Plymouth Fire Department, Town of Plymouth, and DCR Forest Fire Control invite all Plymouth residents to a public meeting to discuss wildfires, their impact on the community, and how residents can help reduce wildfire risks on their properties.

Community Wildfire Protection Plan

- **launched in 2022, the \$1 billion five-year competitive grant program funded by the *Bipartisan Infrastructure Act***
 - **a means of bringing local solutions to wildland fire management.**
- **In developing and implementing CWPPs, communities assume a leadership role in reducing wildfire risk on federal and nonfederal land.**



www.ready.gov/wildfires

For all kinds of preparedness info

www.wildfirerisk.org

Information for communities with wildfire risk

www.sixponds.org/news/wildfire-protection/firewise-and-six-ponds

Six Ponds website page

www.nfpa.org/education-and-research/wildfire/firewise-usa

Firewise website page

Helpful References





THANK YOU for your concern.